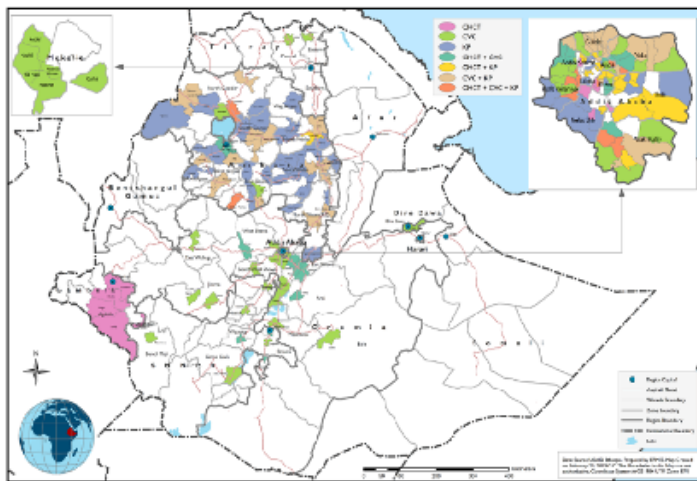
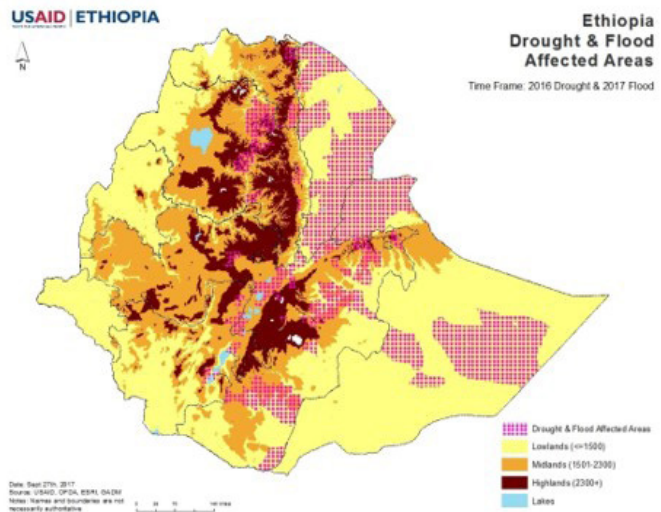


Using Spatial Information to Bridge Knowledge Gaps and Improve Programming

SI's Ethiopia Performance Monitoring and Evaluation Service (EPMES) project supports USAID/Ethiopia to integrate Geographic Information into the design, implementation and monitoring of Projects and Activities. In 2019, EPMES prepared Geographic Information System (GIS) maps to inform USAID/Ethiopia Project and Activity design, and to enhance the effectiveness of their Activities by targeting geographic areas with the highest need for support using spatial information. Additionally, the Mission utilizes these services to minimize duplication of services amongst Implementing Partners and to identify opportunities for Activity integration through GIS maps.



As an example, EPMES mapped the high malaria prevalence locations in relation to the location of USAID/Ethiopia malaria activities. The mapping showed that malaria prevention and treatment activities could be better aligned with the geographic areas of high malaria prevalence. USAID/Ethiopia used these findings to guide the development of the new Malaria Operational plan. The map also triggered the President's Malaria Initiative team to adjust their malaria prevention and control budget and to focus their interventions in the regions with high malaria burdens.

The Assets and Livelihood in Transition (ALT) Office also used EPMES's GIS services during the design of the Highlands Resilience Project to determine the geographical foci of this initiative. By examining the maps produced by EPMES overlaying USAID Activities and the government's Productive Safety Net Program (PSNP), the ALT Office identified gaps in coverage of the PSNP. Based on these findings, the ATL office selected the implementation locations for the disaster response and resilience project to fill these gaps.

There are numerous other examples of how the maps prepared by EPMES have helped to identify gaps in the coverage of USAID/Ethiopia interventions. The implementation adaptations based on GIS products will support USAID/Ethiopia to improve the targeting of their activities and to increase the effectiveness of their development interventions to achieve expected results. The maps have also served as critical tools to prevent continual duplication of efforts across several Activities, sectors and the interventions of other donors. Over the last three years, EPMES produced over 750 maps to aid USAID/Ethiopia's Activities.