



USAID

ከአሜሪካን ሕዝብ

**GENDER &
YOUTH
LEARNING EVENT**

Gender & Youth in Food Security

Ballroom 2

Domains of Gender Analysis



Laws, Policies, Regulations and Institutional Practices



Cultural Norms and Beliefs



Gender Roles and Responsibilities and Time Used



Access to and Control Over Assets and Resources



Patterns of Power and Decision Making

USAID Feed the Future Activities Represented in the Panel

Livelihood for Resilience Activity

Reduce food insecurity and increase resilience for households in 27 PSNP woredas of Amhara, SNNPR, Tigray, and nine PSNP woredas of Oromia. Four sub-purposes:

- Members of PSNP households have increased capacities for undertaking resilient livelihoods
- PSNP households have economically viable and resilient livelihood portfolios
- An enabling environment supports resilient livelihoods for PSNP households
- Collaboration, learning and adaptive management processes enhance, scale up, or facilitate replication of impact.

Development Food Security Activity

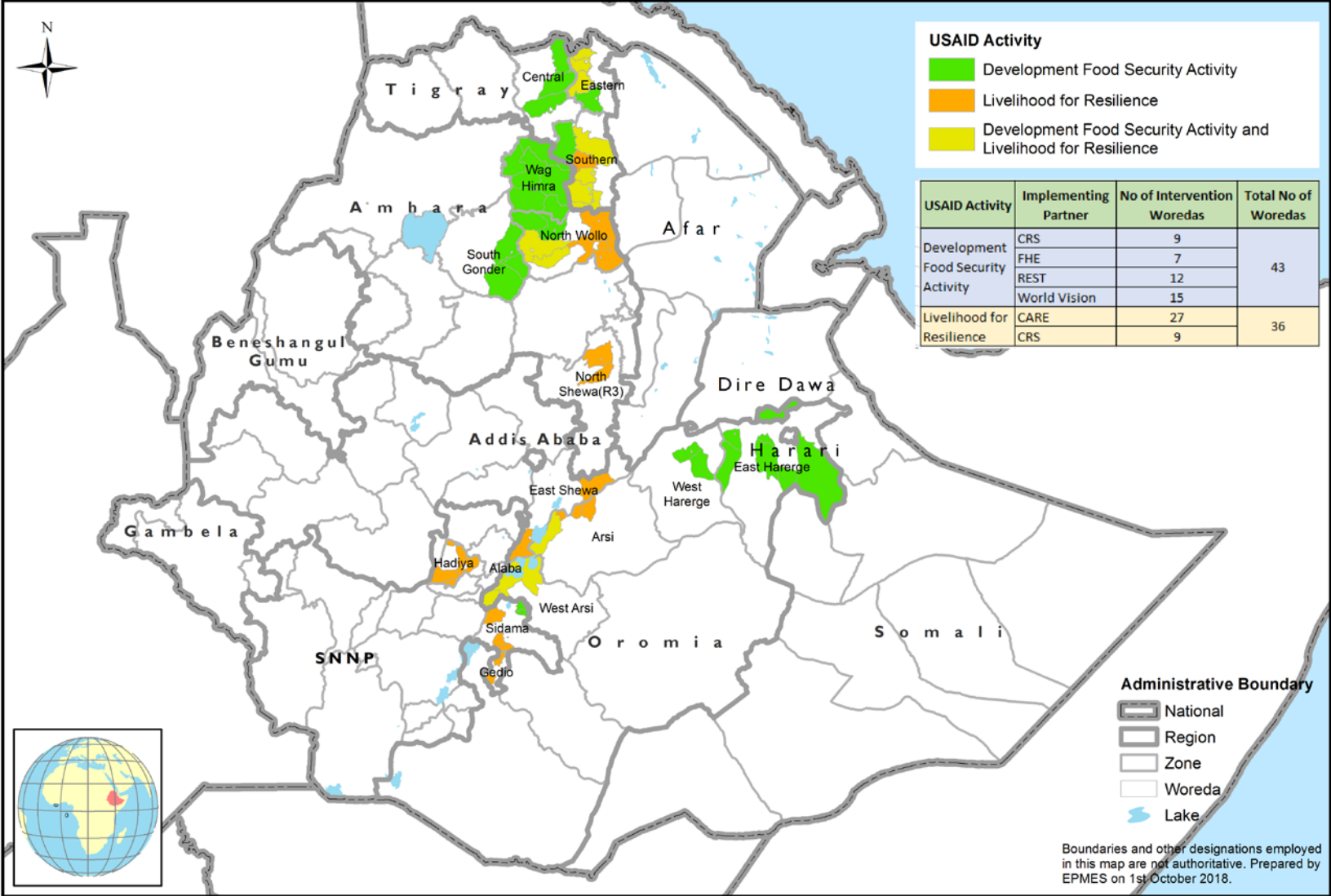
- GoE and community systems respond to reduce communities' and households' vulnerability to shocks
- Households improve their sustainable economic well-being
- Pregnant and lactating women and children under five (CU5) have improved nutritional status
- Women and youth have increased access to and control of community and HH resources

Strong Links to PSNP 4 Goal: Resilience to shocks and livelihoods enhanced, and food security and nutrition improved, for rural households vulnerable to food insecurity

Intervention Areas

USAID | ETHIOPIA

Development Food Security Activity and Livelihood for Resilience Implementation Woredas



Research Methodology

The Researches are guided by the **5 Core Areas of Inquiry**:

Area of Inquiry 1: Gender Roles, Responsibilities and Time Used

Area of Inquiry 2: Patterns of Power and Decision-Making

Area of Inquiry 3: Access to and Control over Assets and Resources

Area of Inquiry 4: Meaningful Participation in Public Decision-Making

Area of Inquiry 5: Gender Based Violence (GBV)

Each organization did a separate gender analysis using mixed methods:

- Focus Group Discussions (e.g. 24 hour calendar)
- Key Informant Interviews
- Secondary data analysis
- One research involved household survey



USAID

ከአሜሪካን ሕዝብ

LEARNING EVENT GENDER & YOUTH

TUESDAY, OCTOBER 9, 2018

