

# Innovating & Learning Through Developmental Evaluation



Social Impact, Inc.'s (SI) Developmental Evaluation (DE) for the USAID Jalin project is a three and a half-year monitoring, evaluation, and learning (MEL) activity administered by USAID/Indonesia's Health Office.

The DE delivers lessons learned to USAID and the Government of Indonesia's Ministry of Health (MOH) and recommends course corrections for the Jalin maternal and newborn health (MNH) activity.

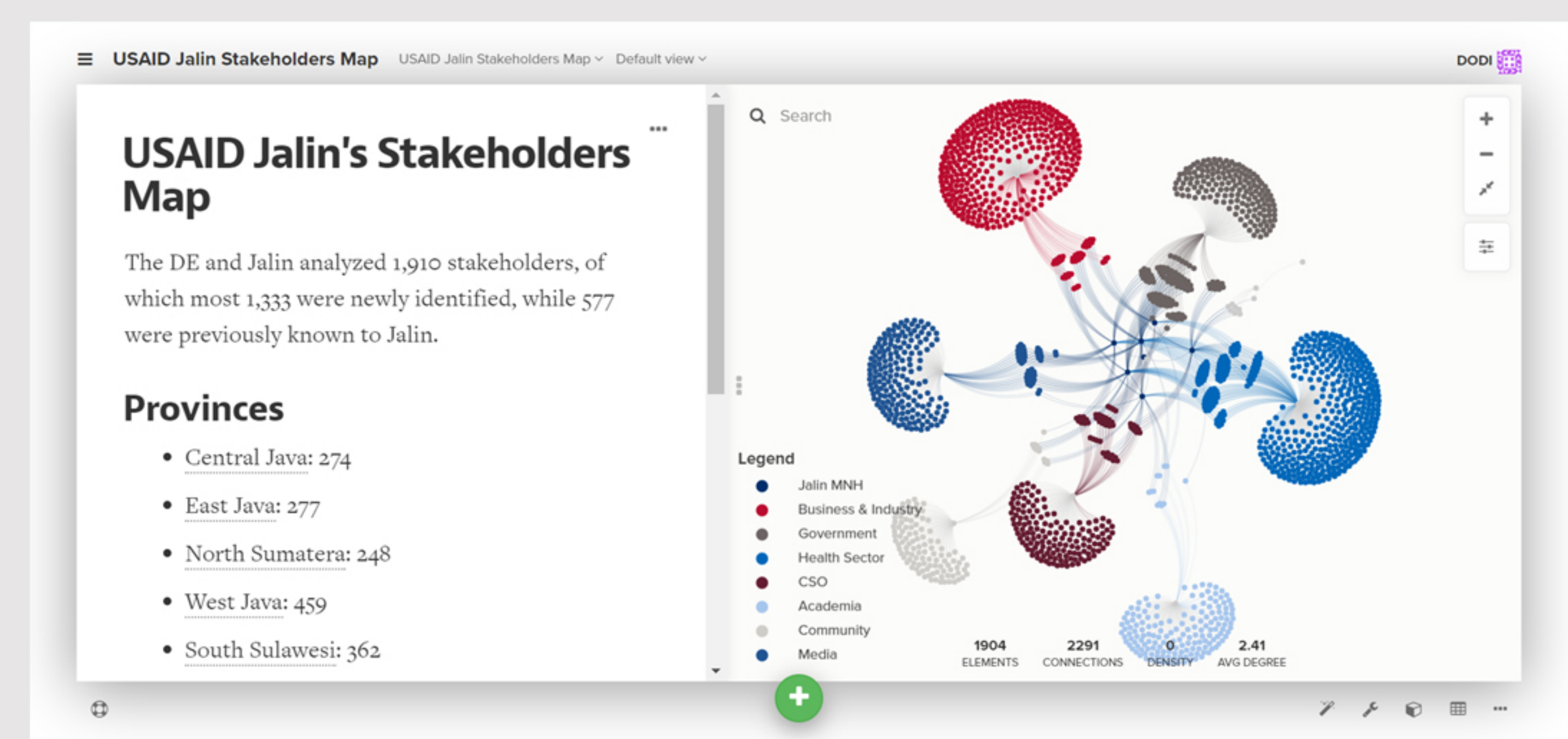
Since 2018, the DE has supported adaptive management by USAID, MOH, and Jalin. creating new learning and innovating within the complex MNH system in Indonesia.



## Gauging the functionality of Jalin's relationships with stakeholders

### Illustrative Example

SI analyzed and mapped the relationships between 1,910 stakeholders in six provinces to enable Jalin to find local partners with the skills and willingness to engage in partnerships to improve MNH outcomes.



A network map of health, private sector, government, CSO, academic, media, and other stakeholders using Kumu.

### Outcomes

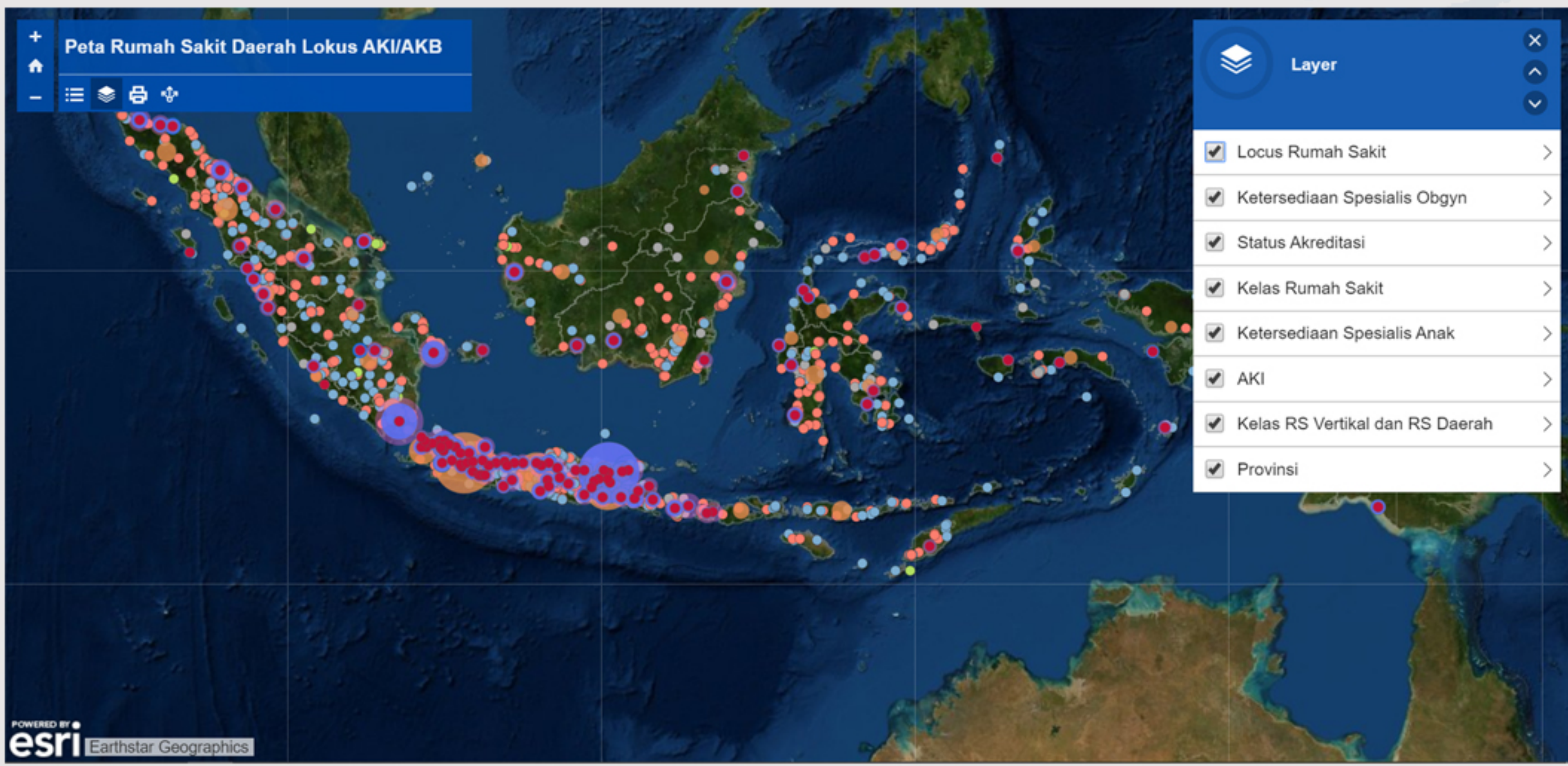
- Strengthened Jalin's whole-of-market approach to engage a variety of stakeholders.
- Assisted Jalin to create 17 cross-sectoral partnerships to increase maternal and newborn survival.



## Monitoring the operating context for MNH in Indonesia

### Illustrative Example

For the MOH's Directorate of Family Health, SI mapped human resources (HR) and accreditation statuses at 3,000 central and local hospitals to help identify gaps in the referral system.



An online interactive map of hospitals and maternal and newborn mortality using Esri's ArcGIS.

### Outcomes

- Informed the Minister of Health in a presentation on maternal mortality.
- Used to identify eligible districts for special allocation funding for MNH and a national mentoring program.



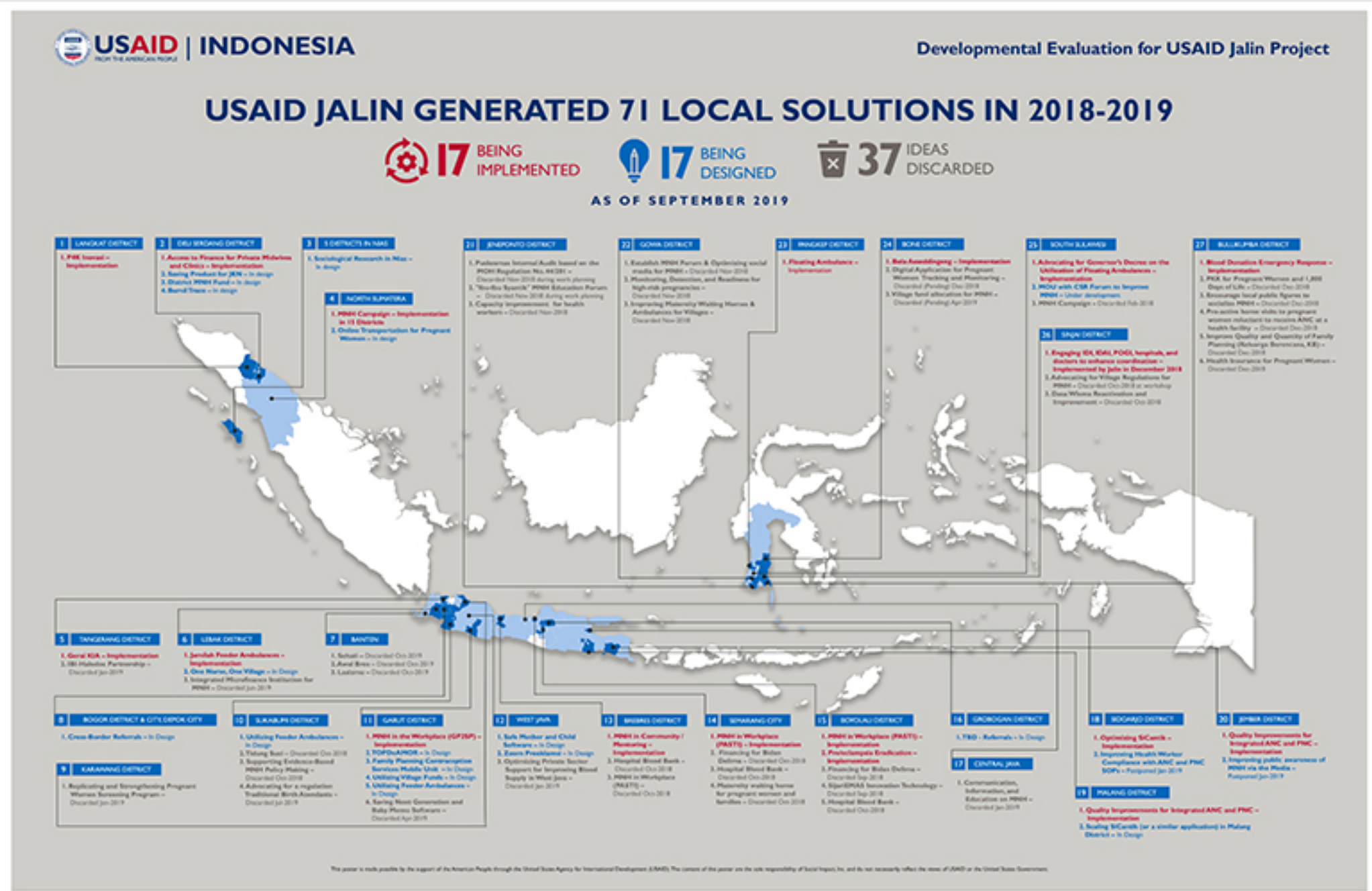
## Assessing Jalin's adherence to core operating principles and technical focus areas

### Illustrative Example

SI evaluated 71 local solutions cocreated by Jalin and its partners to improve MNH, analyzing their evidence utilization, problem definition, stakeholder engagement, and progress toward objectives.

### Outcomes

- Generated lessons learned to assist USAID to modify Jalin's scope of work and revise its results framework.
- Recommended solutions to scale to other provinces and transition to local partners for sustainability.



A visualization of Jalin's 71 local solutions in six provinces as of September 2019.



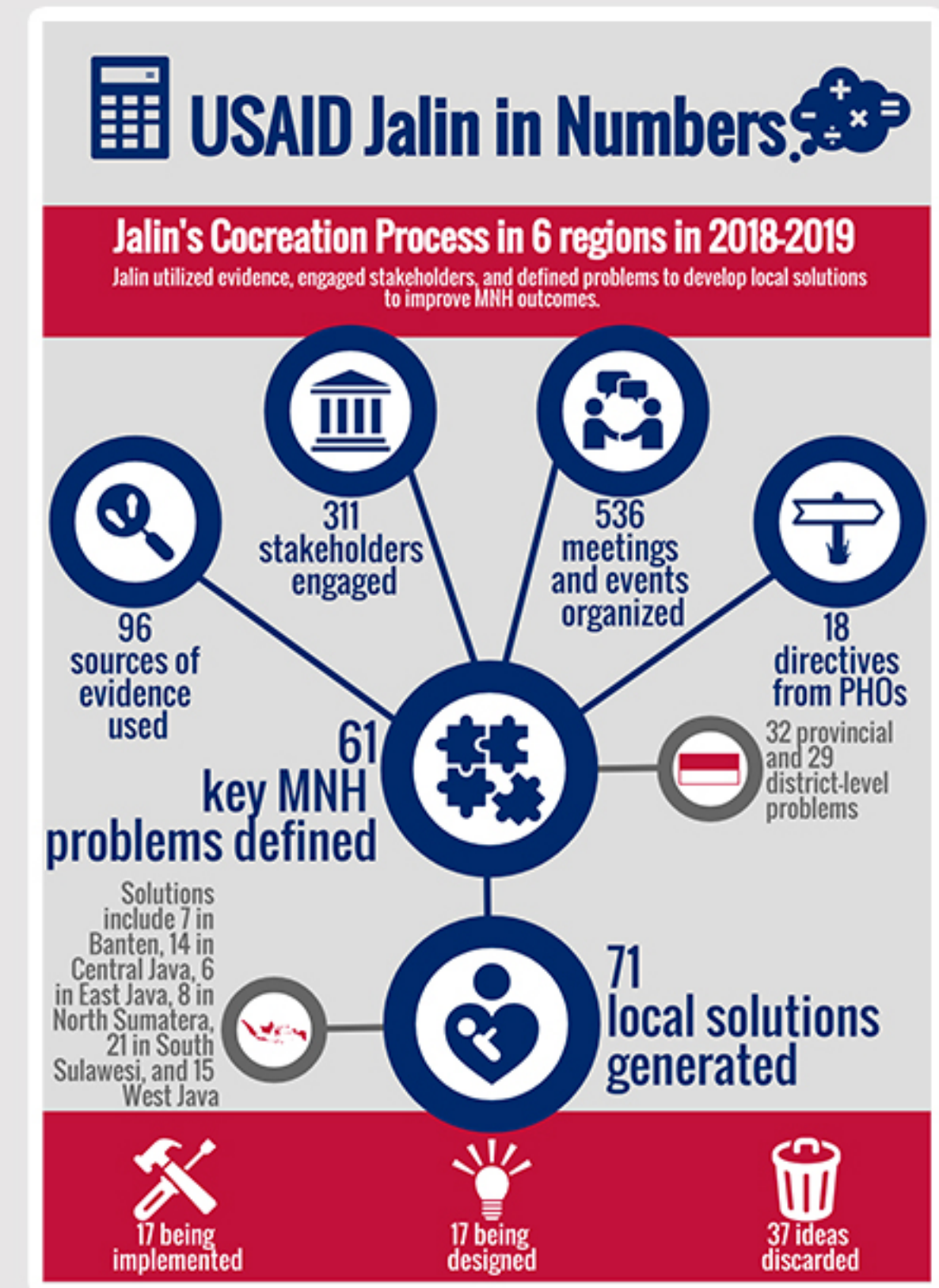
## Delivering timely & actionable recommendations to improve project management

### Illustrative Example

SI has delivered its findings and recommendations through reports, presentations, infographics, online geographic and network maps, facilitated workshops, and posters to reach its audiences in the most persuasive format possible.

### Outcomes

- Made 77 recommendations, of which 54 have been accepted and acted upon as of November 2019.
- In addition to the outcomes listed above, reformed Jalin's multi-stakeholder advisory body and evaluated USAID's activity design process for Jalin.



An infographic of Jalin's cocreation process.